



VANCOUVER ISLAND
BONSAI CLUB

VANCOUVER ISLAND BONSAI CLUB

December Newsletter

December 21, 2009

Newsletter Highlight

Meeting Programs	1
Membership Dues	1
Creative Writing	1
Weather Warning	2
Mallshow Coordinator	2
Global Warming	3
Membership	3
Advertisers	4

Our Next Two Meetings:

Monday Dec 21, 7:30 pm
Monday Jan 18, 7:30 pm

Garth Homer Society
Auditorium
813 Darwin Avenue
Victoria, BC

2009 VIBC Officers

President	Chuck Hickman
Past-Pres	Randy Kowalchuk
Treasurer	Judy Horsland
MallShow Coordinator	Vacant

Monday December 21, 2009 ...

Christmas Party! Come and join in the festive spirit with your bonsai buddies. Please bring finger foods, either savoury or sweet, for pot-luck snacking. There will be tables set up for anyone wishing to sell or swap bonsai or Christmas-related items.

Show & Tell: Decorated Christmas bonsai contest. Let your imagination run wild in decorating your tree. (You could win a prize for the best tree)

Raffle Table: There will be NO regular raffle at this meeting.

Coming in.....

January 18 - Show & Tell: Winter silhouettes.
Ramification - How to achieve this look of beautiful fine branching.

Club Membership

Club membership fees are coming due at the end of the year and any members paying their fees at the November and December meetings will be entered in a draw for a prize.

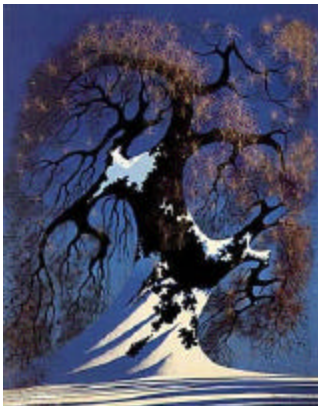
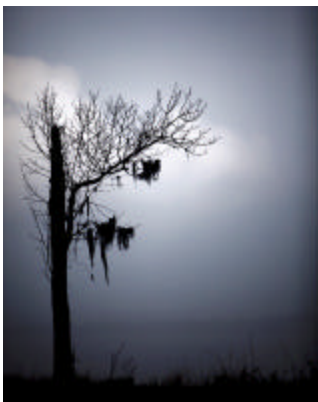
A blank membership form is located on the back page of the newsletter and blank forms will be available at the meeting.

Creative Writers Wanted

If you have a hidden creative writing talent wanting to be unleashed, we are always looking for articles to publish in the Club newsletter.

You can submit an article via the website or hand in your copy at a club meeting. The articles must be bonsai related and can include photos or artwork. The use and publication of same are at the discretion of the club.

See Randy for any information.



Weather Warning...

Its only a sober warning but some of us remember bonsai chaos brought on by extremely cold weather in the winter of 1989. Minimum temperatures for February ranged from 11.8 to -0.6 C during the month. It was the coldest February on record with an average mean temperature of -0.1 C, breaking the previous low mean of -2.1 C. To make matters worse, there were specific record lows for the six days from the 5th through the 10th with no snow to protect plants from high winds accompanying the devastatingly low temperatures! What to do when the forecast threatens these conditions? You better have at least a sheltering garage in mind. The species least damaged that year were the conifers—pines, firs, and spruces - as well as Zelkova, Shimpaku, Ash, and the native junipers.

More Winter Works...

Plan ahead to dormant spray your trees with lime sulphur and dormant oil. Remove landscape leaves as they fall onto the bonsai and the bonsai leaves themselves. Up to three sprayings and monthly intervals are suggested during the winter of deciduous bonsai (definitely not your conifers). The preparation will kill fungus and control insects and their eggs on your trees often hiding in the bark. Spray branches and the trunk but try not to get much on the soil. *Laters Dormant Spray Kit* Is available at most home and garden centres for around \$10.

2010 MallShow Coordinator

We are looking for any able bodied person to volunteer to be the 2010 Mallshow co-ordinator. Our annual show is scheduled for Mother's Day weekend in May.

Previous coordinators have prepared a "How To" manual which will make the job an easier one. If you are interested please see one of the Club Board members.

Interesting Web Sites

www.artofbonsai.org

www.bonsai-nbf.org

www.crataegus.com

Global Warming?? - Where??



Well hope everyone survived the last round of snowfall we had along with the frigid temperatures. In actuality, the snow was a blessing in disguise as it gave our beloved bonsai some much needed insulation for the frigid temperatures which followed. I have looked at my trees and believe they all survived all be it some were scarily bent out of shape from all the snow but have since recovered.

I guess this is just a reminder that we do get winter here sometimes and we need to make sure our trees are protected somewhat especially from the damaging winds.

Have a very Merry Christmas everyone.

Randy

Vancouver Island Bonsai Club

Membership Renewal /Application Form for 2010

I wish to renew my membership_____ or I wish to apply for membership _____ (New member)
Attached is \$20.00 for single membership____ or Attached is \$25.00 for family membership ____

Name(s) _____

Address _____

City, Province _____ Postal Code _____

Phone Home: _____ Phone Work: _____

Email : _____

Please indicate whether you would like to receive the Club Newsletter by Regular mail_____ or by email notification of posting to the club website_____

If you are mailing this form, please mail to:

Vancouver Island Bonsai Club
PO Box 8674
Victoria, BC. V8W 3S2



JAPAN BONSAI
GARDEN ART

TAK YAMAURA
Owner/Consultant

16164 - 24th Ave.
S. Surrey, B.C.
V4P 2S3 Canada

Phone: (604) 536-9220
Fax: (604) 536-8799
www.japanbonsai.com

Nebari Bonsai Canada
making bonsai accessible

Mark Paterson
owner

Bonsai and stock
Bonsai workshops
Bonsai maintenance

250-661-9514
itsmarkp@gmail.com
itsmarkp.googlepages.com
retail sales by appointment only




SALMOND ASHURST
LAWYERS NOTARIES PUBLIC

- ? We Look after Seniors Needs with Compassion and Integrity
- ? We Assist in Preparation of Wills, Powers of Attorney, and Health Care Agreements
- ? We assist Executors in Obtaining Probate of Estates from Beginning to End
- ? We Accept Appointments As Executors Where Appropriate and as Well Will Act As Attorneys Under Powers of Attorney

Please call us at 250-477-4143 for a consultation